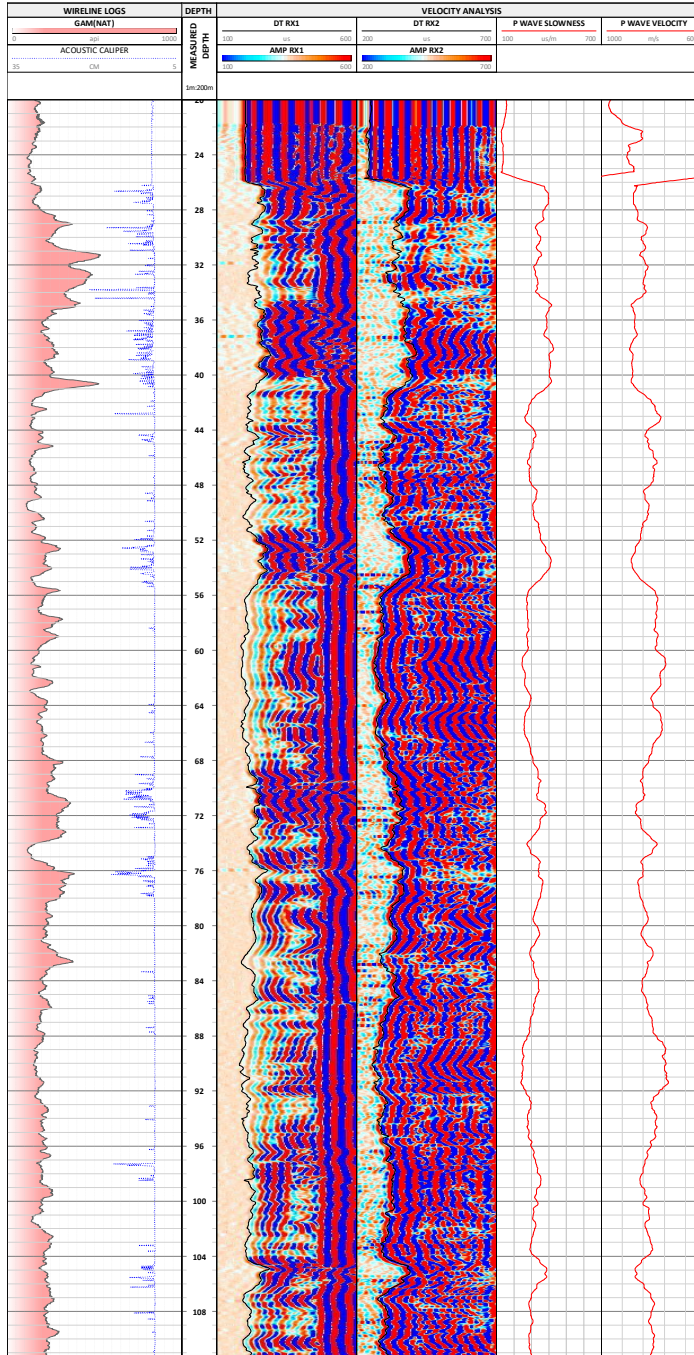


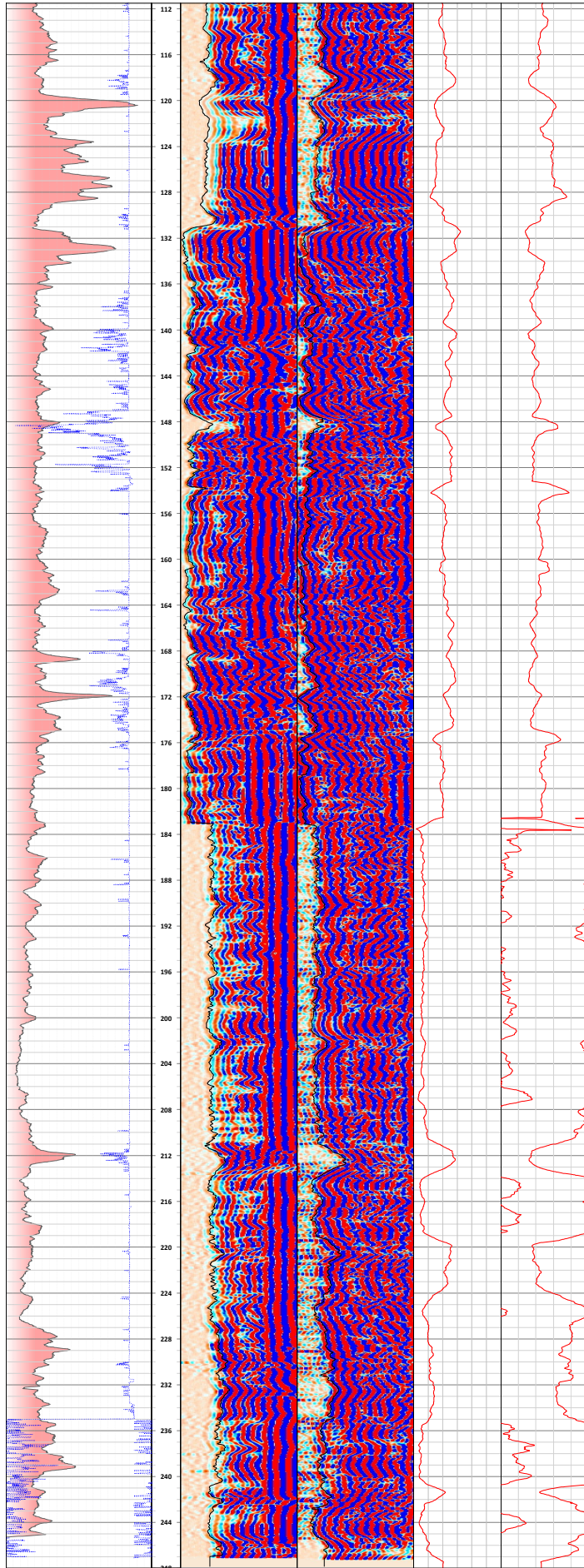
JOB NUMBER: 432	PLATFORM: N/A	DRILL COMP.:	SERVICE COMP.: Century Wireline Services
PROJECT:	EASTING: N/A	DRILL START:	WELL AZIM (deg): 27.1
FIELD:	NORTHING: N/A	DRILL END:	WELL INCL (deg): -73.88
PROVINCE:	ELEVATION (m): N/A	RIG NUMBER:	

BOREHOLE RECORD				CASING RECORD			
BIT SIZE (mm)	DEPTH FROM (m)	DEPTH TO (m)	FLUID TYPE	TYPE	I.D. (mm)	DEPTH FROM (m)	DEPTH TO (m)
114.3	0	21	BENTONITE	STEEL	109.22	0	21
95.25	21	290					
				DRILLER DEPTH	290m	LOGGER DEPTH	247m

SERVICES									
DATE	RUN NR.	TOOL NB.	FROM(m)	TO(m)	ZERO	ENGINEER	REMARKS		
22/09/2017	1	2423	0.00	248.00	0.00	SPENA/SALDARRIAGA	LOG DOWN INSIDE NQ		
22/09/2017	1	2423	248.00	0.00	0.00	SPENA/SALDARRIAGA	LOG UP INSIDE NQ		
22/09/2017	2	2376	0.00	248.00	0.00	SPENA/SALDARRIAGA	RAN THE ATV DOWN HOLE		
22/09/2017	2	2376	248.00	228.00	-0.20	SPENA/SALDARRIAGA	RAN THE ATV UP HOLE		
22/09/2017	3	1103	0.00	248.00	0.00	SPENA/SALDARRIAGA	RAN THE ATV DOWN HOLE		
22/09/2017	3	1103	248.00	228.00	-0.20	SPENA/SALDARRIAGA	RAN THE ATV UP HOLE		
22/09/2017	4	2376	0.00	230.00	0.00	SPENA/SALDARRIAGA	RAN THE ATV DOWN HOLE		
22/09/2017	4	2376	230.00	173.00	-0.40	SPENA/SALDARRIAGA	RAN THE ATV UP HOLE		
22/09/2017	5	1103	0.00	230.00	0.00	SPENA/SALDARRIAGA	RAN THE ATV DOWN HOLE		
22/09/2017	5	1103	230.00	173.00	-0.20	SPENA/SALDARRIAGA	RAN THE ATV UP HOLE		
22/09/2017	6	2376	0.00	175.00	0.00	SPENA/SALDARRIAGA	RAN THE ATV DOWN HOLE		
22/09/2017	6	2376	175.00	125.00	0.00	SPENA/SALDARRIAGA	RAN THE ATV UP HOLE		
22/09/2017	7	1103	0.00	175.00	0.00	SPENA/SALDARRIAGA	RAN THE ATV DOWN HOLE		
22/09/2017	7	1103	175.00	125.00	0.00	SPENA/SALDARRIAGA	RAN THE ATV UP HOLE		
22/09/2017	8	2376	0.00	130.00	-0.40	SPENA/SALDARRIAGA	RAN THE ATV DOWN HOLE		
22/09/2017	8	2376	130.00	30.00	-0.30	SPENA/SALDARRIAGA	RAN THE ATV UP HOLE		
22/09/2017	9	1103	0.00	130.00	-0.60	SPENA/SALDARRIAGA	RAN THE ATV DOWN HOLE		
22/09/2017	9	1103	130.00	30.00	-0.40	SPENA/SALDARRIAGA	RAN THE ATV UP HOLE		

CURVES				
TRACK	TITLE	DEPTH FROM [m]	DEPTH TO [m]	DESCRIPTION
1	GAM(NAT)	30.00	417.71	Natural Gamma Ray from Sonic; 11 point median filtered
1	ACOUSTIC CALIPER	30.00	417.71	Average Caliper from acoustic televiwer tool;
2	MEASURED DEPTH	30.00	420.00	Depth;
3	AMP RX1	30.00	417.71	FWS traces from near (2ft) receiver; noise reduce by stacking with factor 10;
3	DT RX1	30.00	417.71	First arrival picks from AMP RX1
4	AMP RX2	30.00	417.71	FWS traces from far (3ft) receiver; noise reduced by stacking with factor 10;
4	DT RX2	30.00	417.71	First arrival picks from AMP RX2
5	P WAVE SLOWNESS	30.00	417.71	Compressional wave slowness, derived from velocity analysis in us/m;
5	P WAVE VELOCITY	30.00	417.71	Compressional wave velocity in m/s;





35	CM	1	0.00	0.00	0.00	0.00	0.00
37	ACQUSTIC CALIPER		0.00	0.00	0.00	0.00	0.00
38	GAMINAT		0.00	0.00	0.00	0.00	0.00
39	WIRELINE LOGS		0.00	0.00	0.00	0.00	0.00
40	DEPTH		0.00	0.00	0.00	0.00	0.00

**DISCLAIMER**

Century Wireline Services (CWS) takes all due care to ensure that the data, measurements and interpretations supplied to the client are correct and accurate. CWS makes no representation and gives no warranty as to the use which may be made of the data, measurements or interpretations and expresses no opinion as to the conclusions, interpretation or analysis of the data and measurements supplied.

CWS does not know and cannot determine the performance, profitability or viability of any particular site for commercial purposes. The client must conduct its own investigations and research and form its own conclusions as to the commercial viability of any site.

The client hereby acknowledges that it has not and will not act or rely upon any opinion, interpretation or analysis made by CWS, its employees or agents.

Liability is excluded for the loss suffered by any party resulting in any way from the use of or reliance on any opinion, interpretation or analysis given by CWS, its employees or agents.